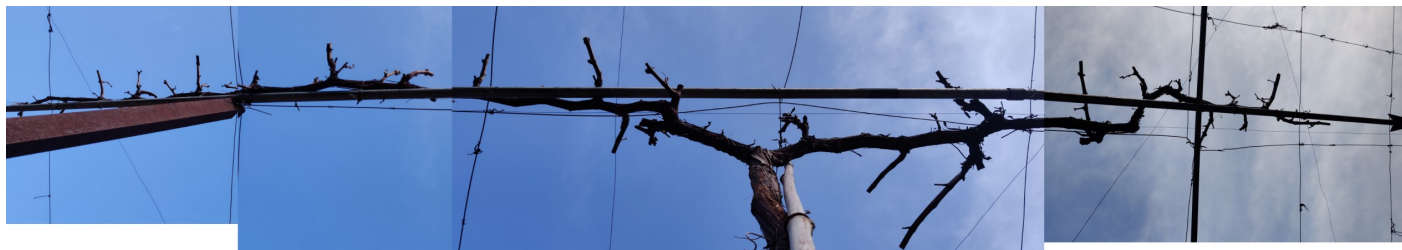


Basics for grape vine

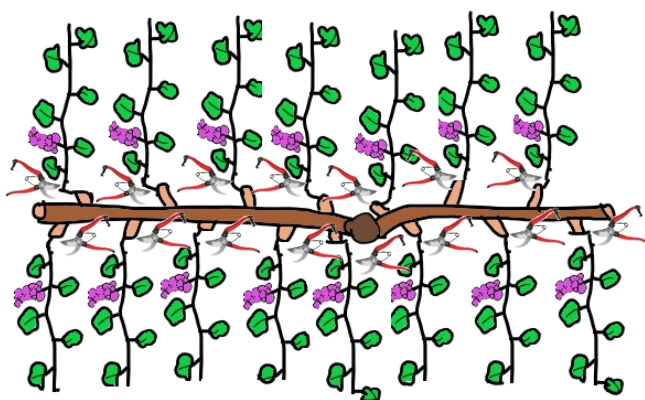
5



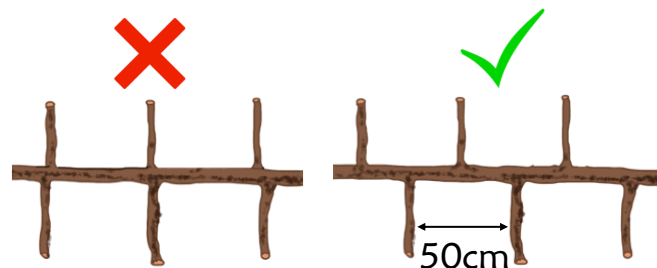
Basics 1. – Cut back.



Repeat.



Basics 3.- Spacing alternately.



Basics 4. - How to cut branches.



Between buds

Basics 2. – Bend and bind the branch.



at ARDC Bajo



མོ་ནུམ་ཞིག་འཛོལ་དང་གོང་འཕེལ་གྱི་གྲོ་བ། བཞོ་ཐང་། དབང་འདུས་མོ་ཐང་།
Agriculture Research and Development Center
Bajo Wangdue Phodrang
Department of Agriculture, Ministry of Agriculture and Forests



Pruning & Training - Vine Trees -

Starter Guide

Contact: Sonam Chopel, Tashi Phuntso
RNR-RDC Bajo, Department of Agriculture, MoAF
Bajo, Wangduephodrang, Bhutan
Phone: +975-02-481260, 481209
E-mail: sonamchopel@moaf.gov.bt
bumthaptashi@gmail.com



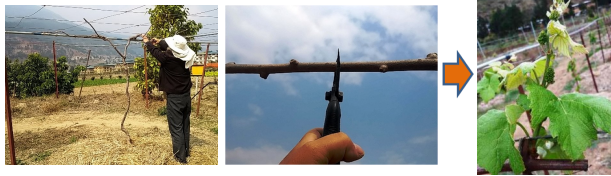
Integrated Horticulture Promotion Project
2016-2021



Points of techniques

What is **Pruning** and **Training** ?

Pruning: To trim unnecessary branches.



Training: To form proper tree/vine shape & branches.



Reasons for pruning and training...

Pruning and training **require your time and effort**, but pruning and training can **provide you several good things**.

No pruning tree

Pruning tree

No need to work

Need to maintain

Disturbing sunlight

Satisfied sunlight

High risk of pests & diseases

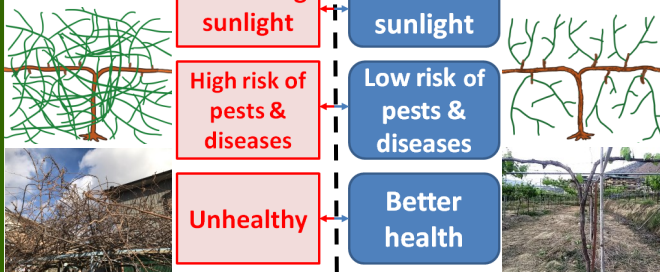
Low risk of pests & diseases

Unhealthy

Better health

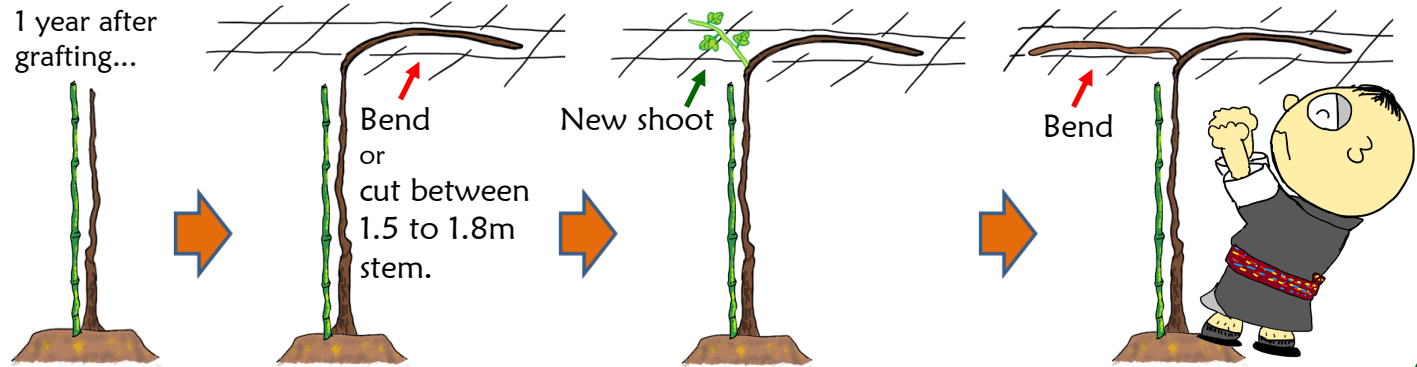
Less number of fruits

Quantity & Quality fruits



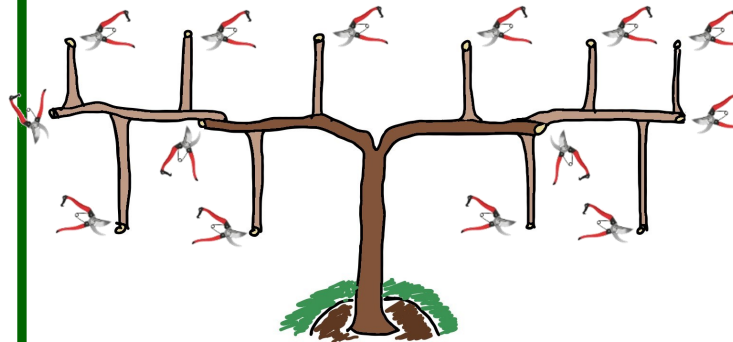
Common training technique for 1 year old kiwi and grape vine

1 year after grafting...



Basics for kiwi tree

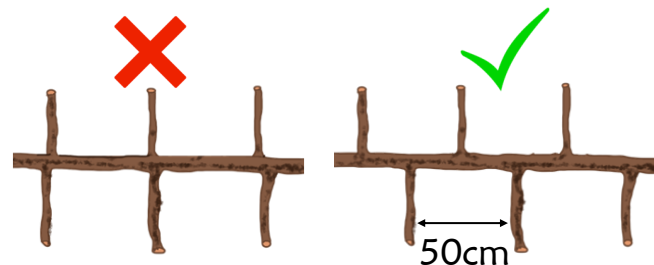
Basics 1. – Cut back.



Basics 2. – Bend and bind the branch.



Basics 3.- Spacing alternately.



Kiwi tree form



Basics 4. - How to cut branches.



Between buds

A certain kiwi farm in Lalidap, Dunglagang, Tsirang



For your target.